

MULTIPLEX

Newsletter

November 2024

Holborn Viaduct | Issue No.3

Headlines in brief

- Introduction
- Site updates
- Look ahead
- Community update
- Environmental update



Welcome to our November update

Multiplex Construction is a premier global construction company that has been shaping skylines and delivering iconic projects for over 55 years. We have been appointed to manage the construction of Holborn Viaduct.

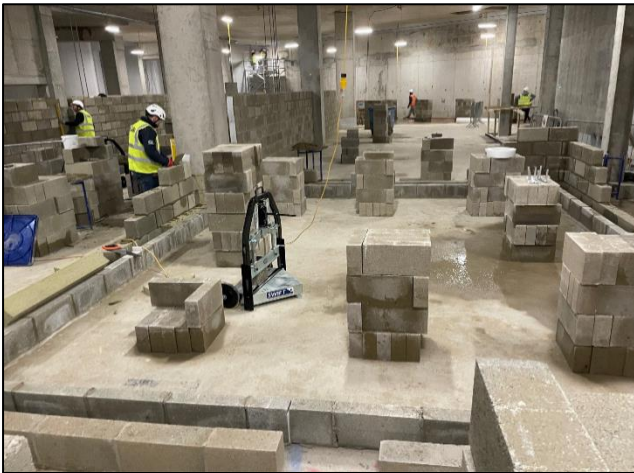
We will be working in partnership with Royal London Asset Management. Royal London are a key player in the UK commercial property investment market. They aim to uphold the aims of sustainable development: To enhance the economic, social, and environmental benefits.

[Constructing a better future](#)

The new scheme will offer future-proof, flexible working space that will support sustainability benefits and significant improvements to the surrounding public realm. The new thirteen story building will deliver a sustainable, adaptable, and healthy new workplace environment; including biodiverse green terraces to promote outdoor working.

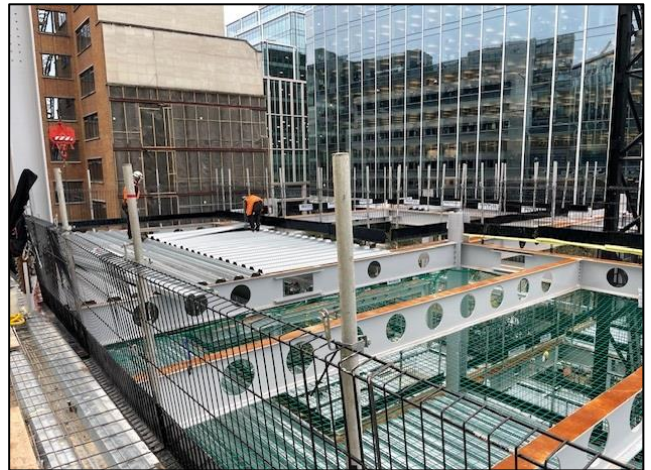
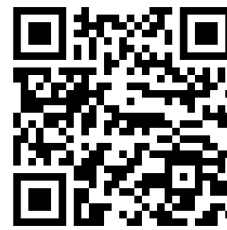
Site Progress

- Works are progressing well on site, entering the 3rd month of the project.
- The steel frame is being erected with our specialist partner, BHC, and is currently between level Ground and 06.
- Concrete slabs are being poured on levels 01 and 06.
- Groundworks contractor, Erith, is demobilising off site.
- Blockwork continues in the basement with our specialist contractor, Swift Brickwork.
- The project has 3 tower cranes, all of which are installed and operational.
- The hoist is installed and providing vertical access up the building, continuing to climb with the steel frame.
- The Pit Lane and Gantry with cycle lane diversion for site deliveries on Farringdon St. have been completed, ensuring the cycle lane remains fully operational for the public.



December Look Ahead

- In December, the project will continue to progress with steel being erected at a fast pace from Level 03 to Level 09.
- Concrete slabs will be poured following the steel erection.
- Basement walls and floor screed will progress, preparing for painting.
- Mechanical and Electrical trades will mobilise in preparation for a full start in the New Year.
- Large items of Mechanical Equipment will be delivered and placed on the floors in readiness for installation.
- As part of our partnership with Considerate Constructors Scheme we are looking to gain feedback from the public about the project, the site and our work in general.
- If you would like to provide feedback, please visit the QR code below



Environmental Update

- We launched our material passport for the project, which will facilitate re-use of materials, tracking embodied carbon & preventing waste to landfill.
- This will be the first material passport conducted at a project wide level by Multiplex and will cover a number of key structural elements to be utilised within the building.



Community Update

- We are currently fundraising for Movember, supporting men's health.
- As well as growing some questionable facial hair, the team have managed to raise over £1,000 in aid of the charity. A fantastic result so far.
- Last month some of the team attended HMP Brixton to volunteer with No Going Back. Supporting soon to be ex-offenders with a CV workshop.
- This session was aimed at educating and developing candidates, so they are ready for work.
- We recently attended an education workshop at Ark Walworth Academy in Southwark, working with students to develop their interview skills.
- Many of the students were interested in construction as a career and we are looking to offer opportunities to welcome them to site.
- We continue to work closely with the City of London, ensuring that any overruns or out of hours work are confirmed, and local stakeholders are notified.
- We currently have 8 apprentices working on site, continuing their development in the construction industry.



Key Contacts

**24/7 Emergency phone line:
Holborn Viaduct Security
07825913595**



Patrick Brooker
Multiplex
Social Value Graduate
Patrick.brooker@multiplex.global



Richard Walker
Multiplex
Construction Lead
Richard.walker@multiplex.global



Lucy Mortimer
JBP
Account Manager
Lucy.Mortimer@jbp.co.uk

Site Working Hours

Our standard site working hours, agreed with the City of London, are below:

8am – 6pm: Monday to Friday

9am – 2pm: Saturday

Quiet working hours:

10am – 12pm: Monday to Friday

2pm – 4pm: Monday to Friday

There is expected to be times where extended working hours are necessary and in such instances, advance approval is sought from the City of London.

