

MULTIPLEX

Newsletter

December 2024

Holborn Viaduct | Issue No.4

Headlines in brief

- Introduction
- Site updates
- Look ahead
- Community update
- Environmental update



Welcome to our December update

Multiplex Construction is a premier global construction company that has been shaping skylines and delivering iconic projects for over 55 years. We have been appointed to manage the construction of Holborn Viaduct.

We will be working in partnership with Royal London Asset Management. Royal London are a key player in the UK commercial property investment market. They aim to uphold the aims of sustainable development: To enhance the economic, social, and environmental benefits.

[Constructing a better future](#)

The new scheme will offer future-proof, flexible working space that will support sustainability benefits and significant improvements to the surrounding public realm. The new thirteen story building will deliver a sustainable, adaptable, and healthy new workplace environment; including biodiverse green terraces to promote outdoor working.

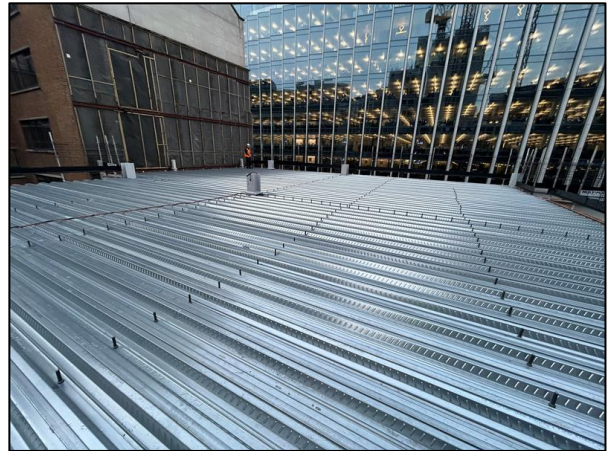
Site Progress

- Steel frame is being erected and is currently between levels 3-9. The steel beams are assembled off site from our specialist partner BHC.
- The concrete slab has been poured up to level 6.
- X-Carb metal decking is being installed on each slab.
- Blockwork in basement continues to be installed from our partners Swift. Creating space for the plant and services to be installed.
- MEP trades are mobilising onto site, with our specialist partner Dornan beginning their work this month.



January Look Ahead

- Steel frame will continue to be installed up to level 10.
- Concrete slab installation will continue with metal decking following.
- MEP fit out will commence.
- Protection gantry to be installed up to level 7.
- Façade contractors will begin to mobilise onto site.



Environmental Update

- Multiplex continue to work towards achieving a robust WLCA following City of London guidance by obtaining carbon information from our new trades starting on-site this month
- We're also monitoring carbon from all our activities on-site to identify reduction opportunities that could be utilised to go above and beyond best practise measures already implemented

Community Update

- The project team took part in a volunteering session with Plan Zheroes at Borough Market.
- Plan Zheroes are a charity that work to collect surplus food and distribute this to local homeless charities.
- We also supported the American International Church at Tottenham Court Road by volunteering at their homeless shelter, serving breakfast to guests.
- Over the festive period we supported our partner Clipfine in their '200 toys' Christmas collection for the Salvation Army. The project donated gifts for children who would otherwise go without at Christmas.



Key Contacts

**24/7 Emergency phone line:
Holborn Viaduct Security
07825913595**



Patrick Brooker
Multiplex
Social Value Graduate
Patrick.brooker@multiplex.global



Richard Walker
Multiplex
Construction Lead
Richard.walker@multiplex.global



Lucy Mortimer
JBP
Account Manager
Lucy.Mortimer@jbp.co.uk

Site Working Hours

Our standard site working hours, agreed with the City of London, are below:

8am – 6pm: Monday to Friday

9am – 2pm: Saturday

Quiet working hours:

10am – 12pm: Monday to Friday

2pm – 4pm: Monday to Friday

There is expected to be times where extended working hours are necessary and in such instances, advance approval is sought from the City of London.

